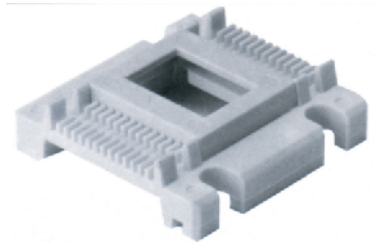


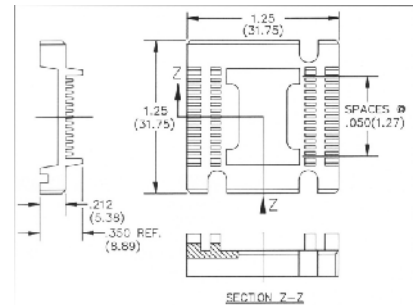


"TWO PIECE" 1¼" X 1¼" CARRIER FOR LSI DEVICES

Part Number	Lead Count	Device Dimensions (mm)		Recommended Clip	Notes
		Width	Length		
029-414-OXX	18	.320 (8.13)	.725 (18.41)	039-200-OXX	Consult Factory
029-411-OXX	18	.400 (10.16)	.725 (18.41)	039-200-OXX	Consult Factory
029-422-OXX	20	.425 (10.80)	.725 (18.41)	039-200-OXX	Consult Factory
029-410-OXX	24	.300 (7.26)	.725 (18.41)	039-200-OXX	
029-405-OXX	24	.400 (10.16)	.725 (18.41)	039-200-OXX	Consult Factory
029-424-OXX*	24	.400 (10.16)	.400 (10.16)	039-206-OXX	
029-406-OXX	28	.400 (10.16)	.725 (18.41)	039-200-OXX	
029-415-OXX	28	.425 (10.80)	.725 (18.41)	039-200-OXX	
029-404-OXX	28	.655 (16.64)	.725 (18.41)	039-200-OXX	
029-418-OXX	28	.520 (13.21)	.725 (18.41)	039-200-OXX	
029-421-OXX***	28	.408 (10.36)	.725 (18.41)	039-219-OXX	Consult Factory
029-407-OXX	30	.400 (10.16)	.725 (18.41)	039-200-OXX	
029-409-OXX	30	.600 (15.24)	.725 (18.41)	039-200-OXX	Consult Factory
029-425-OXX**	40	.235 (5.96)	.725 (18.41)	039-226-OXX	Consult Factory
029-419-OXX**	56	.400 (10.16)	.725 (18.41)	039-200-OXX	Consult Factory
029-423-OXX*	56	.400 (10.16)	.725 (18.41)	039-200-OXX	Consult Factory



Drawing of 28-lead carrier
(others available upon request)



* Special Quad Pack with 6 leads on 4 sides ! On .035" spacing ** On .025" spacing *** 28 "J" leaded device

"TWO PIECE" 2" X 2" CARRIER FOR LSI DEVICES

Part Number	Lead Count	Device Dimensions (mm)		Recommended Clip	Notes
		Width	Length		
029-505-OXX	32	.775 (19.69)	1.400 (35.56)	039-207-OXX	
029-502-OXX	40	1.100 (27.94)	1.400 (35.56)	039-201-OXX	
029-503-OXX	40	1.200 (30.48)	1.400 (35.56)	039-208-OXX	Consult Factory
029-504-OXX	40	.550 (13.97)	1.400 (35.56)	039-207-OXX	Consult Factory
029-521-OXX	44	.775 (19.69)	1.400 (35.56)	039-207-OXX	
029-523-OXX	44	.775 (19.69)	1.400 (35.56)	039-207-OXX	
029-522-OXX	50	1.100 (27.94)	1.400 (35.56)	039-201-OXX	
029-524-OXX	50	.775 (19.69)	1.400 (35.56)	039-207-OXX	Consult Factory
029-525-OXX	100	.551 (14.00)	.787 (20.00)	039-224-OXX	Consult Factory



Drawing of 40-lead carrier
(others available upon request)

